



Intellect's Vendor Portal Overview

Table of Contents

Intellect's Vendor Portal – Product Brief	3
FUNCTION LIST	3
Architecture	4
Integration with SAP	4
Browser Support	4

Intellect's Vendor Portal – Product Brief

Digital business requires agility in the supply chain. The time wasted in queries, clarifications and requests for information can slow down your business. It is important to make information secure yet accessible to your partners.

The supply chain engagement hub – iVEN (pronounced 'I' 'Win') is the central portal built on opensource technologies by us for all your supply chain partners such as direct and indirect material suppliers, service providers, logistics providers to engage with the your supply chain and procurement teams.

iVEN helps suppliers stay up to date with your requirements, purchase orders, their receivables leading to better planning and reduced need for voice and email communications through self-service. Similarly, it helps your SCM teams be aware of order confirmation, dispatch plans, shipment details, inventory as well as any new products that the supplier might be able to provide.

Vendor Portal is a Web-based self-service platform developed by Intellect. It is accessible using a web browser on laptop or mobile. The solution can be deployed on-prem or in the cloud. Since it is developed on open source technology, there is no overhead of buying licenses or incurring AMC other than for Database.

The portal is used by

- Purchase
- Supply Chain
- Accounts
- Administration
- Vendor / Supplier

It manages the vendor master data, transactions such as tender, ASN and reports and provides a self-service platform. And in the backend, it integrates with SAP or any other ERP.

iVEN can integrate with the back-end ERP system to exchange information and create a seamless process flow.

Function List

iVEN gives access to functionalities such as;

- | | |
|-------------------------------------|-----------------------------------------------------------------------|
| • Supplier onboarding | • Delivery Confirmation |
| • Supplier profile | • Advance Shipping Notification |
| • Request for Quotation | • Dispatch details |
| • Response to Request for Quotation | • Supplier Queries |
| • Tender Process | • Requests for information |
| • Reverse Auction | • Reports such as Supplier ledger, open orders, goods receipt details |
| • Purchase Order | • Announcements |
| • Purchase Order Confirmation | |

Architecture

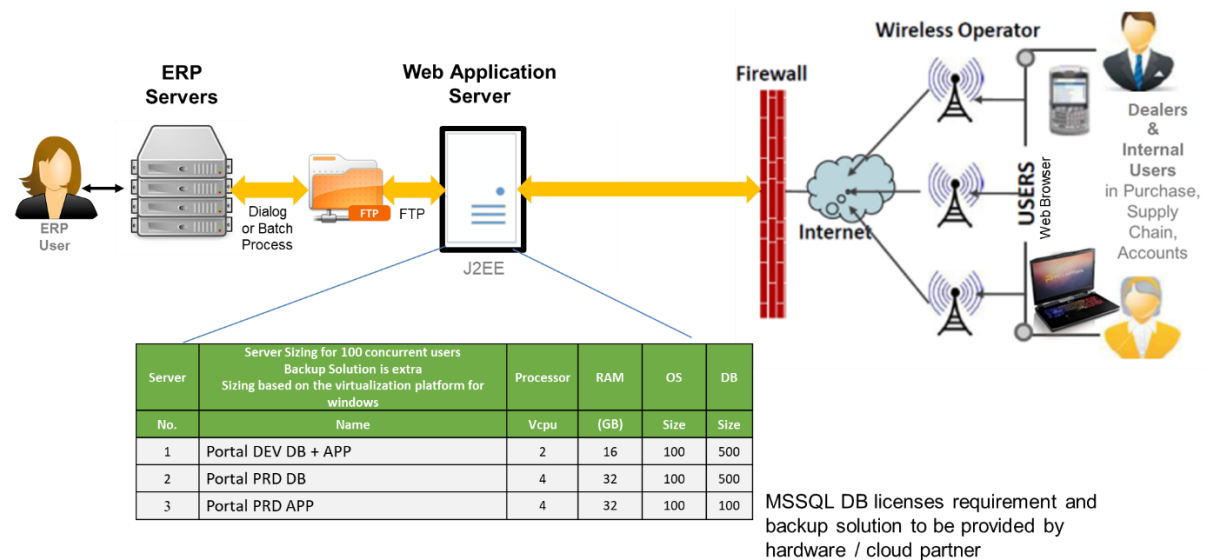


Fig.: Architecture with Recommended Hardware Sizing

Integration with SAP

Integration with SAP ECC can be achieved using ;

- RFC
- BAPI
- Flat file using FTP in three possible ways ;
 - Dialog User – user runs a transaction in SAP ECC which picks up the files from FTP Folder
 - Manual – file is picked up by user and manually uploaded into SAP ECC by the users using their named users (like Dialog User)
 - Batch Mode – a program runs at intervals in SAP ECC to pick up the file in batch mode from FTP folder

Browser Support

