

Tungsten Printix, Secure Cloud Print Management for SAP[®] systems

Brochure

TUNGSTEN
AUTOMATION

Contents

- 3 The Future of Print & Business Processes
- 3 Printix, Secure Cloud Print Management SaaS
- 4 SAP® Output Management with Printix
- 4 Single-tenant and multi-tenant Printix environments
- 4 Printing scenarios and other functions of SAP2Printix
- 5 Printix as an Output Management System for SAP®
- 5 Direct Print and Print Anywhere via SAP2Printix
- 6 Simple Print Environment Set-Up
- 7 Manage and Monitor Printers and Spool Requests
- 7 System Requirements and Installation
- 8 BECONEX SAP2Printix Summary
- 8 Free 30 day Printix trial

Brochure

Tungsten Printix, Secure Cloud Print Management for SAP® systems

The Future of Print & Business Processes

The future of print and business processes is still reliant on paper documents, which include quotes, invoices, payrolls, bills of materials, labels, declarations of conformity, and annual reports, among others. Printing continues to be a vital function for many business processes.

To optimize printing from the SAP systems, organisations can consider migrating to the cloud as part of their strategy maintenance support for ECC runs out at the end of 2027, but users of enhancement pack 5 (EHP5) or earlier will see their mainstream support cut at the end of 2025. Cloud solutions can reduce costs and provide increased flexibility, scalability, and robustness. However, SAP still requires either an on-premises or cloud-based Output Management System (OMS) solution to print documents.

Printix, Secure Cloud Print Management SaaS

Printix is an automated cloud solution that migrates print infrastructures, improves queue and driver management and efficiently combine all components in a centralised client. Allowing users to print from any device, to any printer, at any time.

Using Printix can save local printing costs, reduce administrative overhead, and enhance user productivity. The solution is built for companies of any size, from small to large Enterprise organisations. Available in a subscription model based on either per user or per device per year.

The solution: Implement serverless printing with Printix as an external OMS and the BECONEX SAP2Printix application for SAP® systems.



SAP® Output Management with Printix

For SAP systems, Printix provides cloud print management for both on-premises and cloud-hosted environments.

By integrating the BECONEX SAP2Printix application, businesses can utilize Printix as an Output Management System for SAP® ABAP NetWeaver and related systems like SAP® ECC, GTS, SRM, and others, including SAP S/4 HANA® On-Prem and SAP S/4 HANA® Enterprise Cloud. With Printix, companies can eliminate the need for local print servers, automatically migrate print infrastructures, and streamline queue and driver management.*

Single-tenant and multi-tenant Printix environments

An organisation may have multiple requirements for the Printix system, such as when merging with or acquiring other companies that already use the solution. The SAP2Printix application is compatible with both single-tenant and multi-tenant setups.

In a Printix environment, tenants can be customized, added, or removed for each SAP® system. Once a tenant is configured in the system, anyone can easily create a printer as a SAP® printer.

Printing scenarios and other functions of SAP2Printix

With SAP2Printix, all SAP® print jobs can be managed in the cloud. Both “Direct Print” and “Print Anywhere” options are available. Other features include:

- Customizing views for setting up and managing print environments
- Managing Printix tenants as external OMS
- Tenant-specific customisation
- Monitoring and logging print jobs

* Printix does not currently support SAP S/4 HANA® public cloud



Printix as an Output Management System for SAP®

When using an external output management system for printing documents from an SAP® system with a Windows print server, the system generates a spool request, which is then passed to the server. From there, the spool file is sent to the appropriate printer. What does it look like when working with Printix as an OMS?

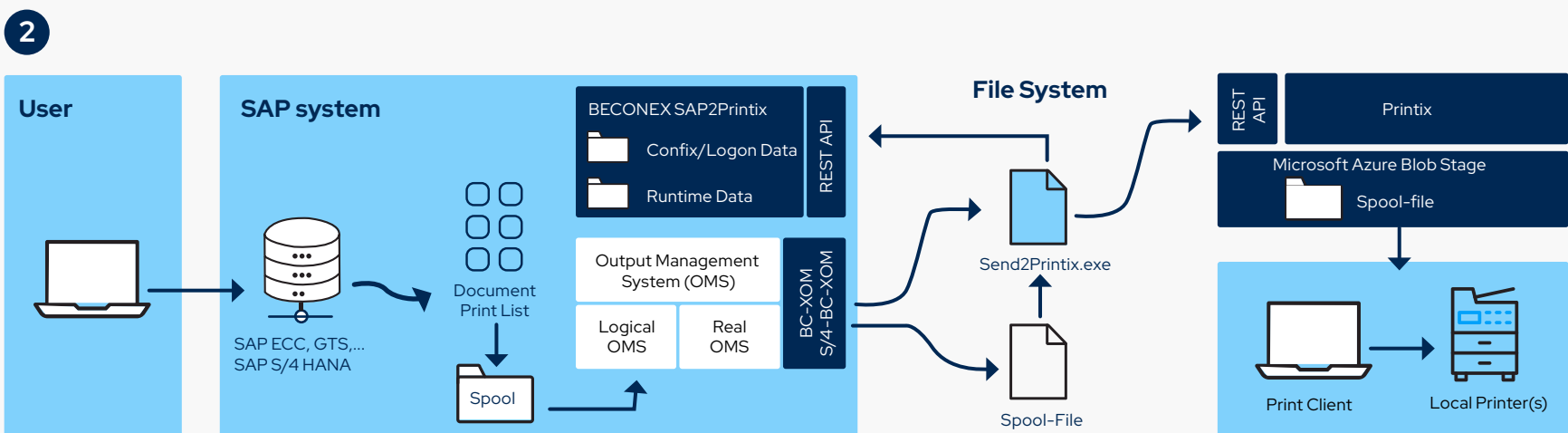
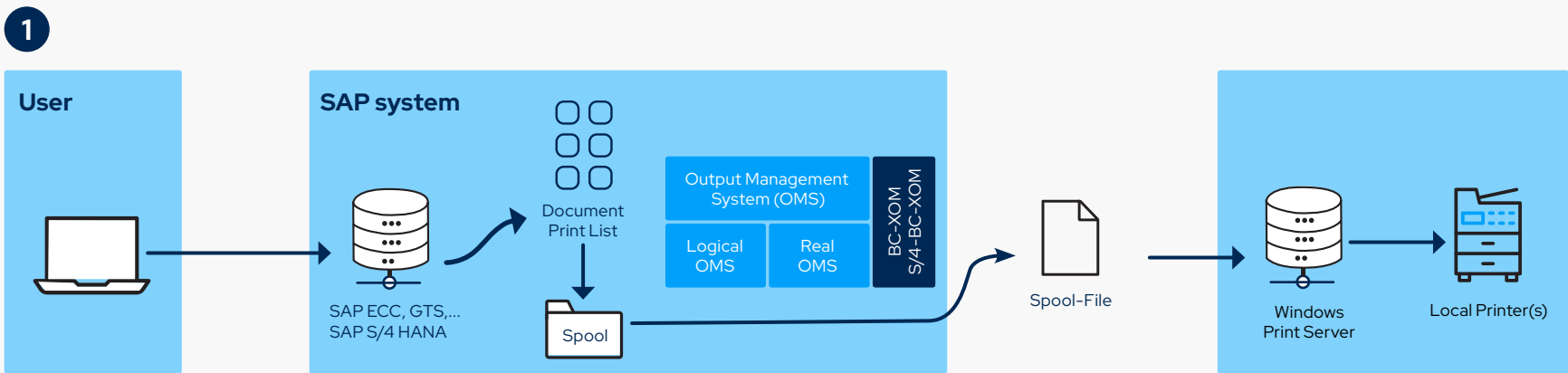
The process begins the same: a user prints a document in SAP®, generating a spool request. However, instead of sending the request directly to the print server, it is sent to SAP2Printix through the SAP® interface for external Output Management Systems.

From here, SAP2Printix takes over:

- SAP2Printix receives the spool file and related information (target printer ID, job ID, etc.) from the BC-XOM interface
- The application retrieves the necessary credentials for the corresponding Printix tenant and performs a printer mapping, as printers have different IDs in the SAP® system and Printix platform
- Using the retrieved information, the application sends the spool file to Printix via a REST call, and the Printix client sends the job to the appropriate printer
- Once the print job is created in Printix, the application performs a spool mapping to link the SAP spool ID to the Printix spool ID. This enables monitoring of print job status and logging of the process in the SAP® database

Printing from the SAP-System with

- 1 an on-premise Windows server compared to 2 the cloud-based Printix solution.



Direct Print and Print Anywhere via SAP2Printix

The SAP2Printix application offers two options for printing documents: Direct Print and Print Anywhere.

The Direct Print method allows users to select the desired printer and immediately start the printing process, by:

- Opening the print file in the SAP® system
- Selecting the SAP® printer and creating the spool request. Depending upon the configurations, the user may need to navigate to the list of spool requests, select the print job, and “Print directly”. Otherwise, the job will be printed automatically

SAP2Printix maps the SAP® printer to the corresponding printer ID in Printix and sends the print job to the designated printer.

This feature also supports automatic printing of system-generated print jobs without any user intervention.

Print Anywhere, on the other hand, is a functionality that enables users to create print jobs and send them to the Printix platform, but allows them to select the desired printer at a later date using either the Printix mobile app or card authentication:

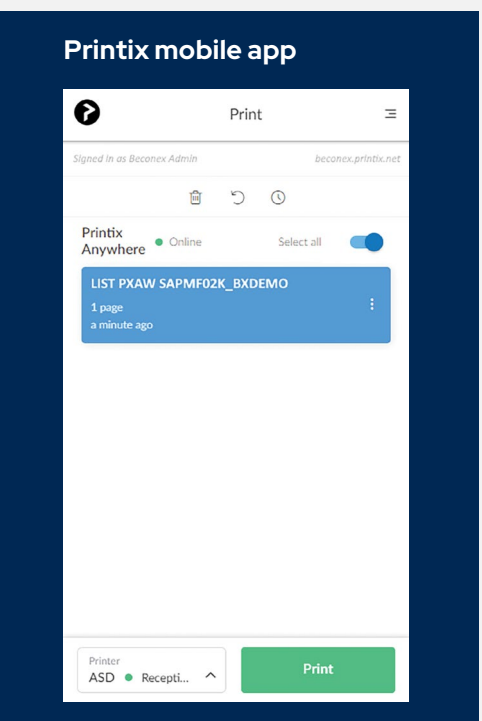
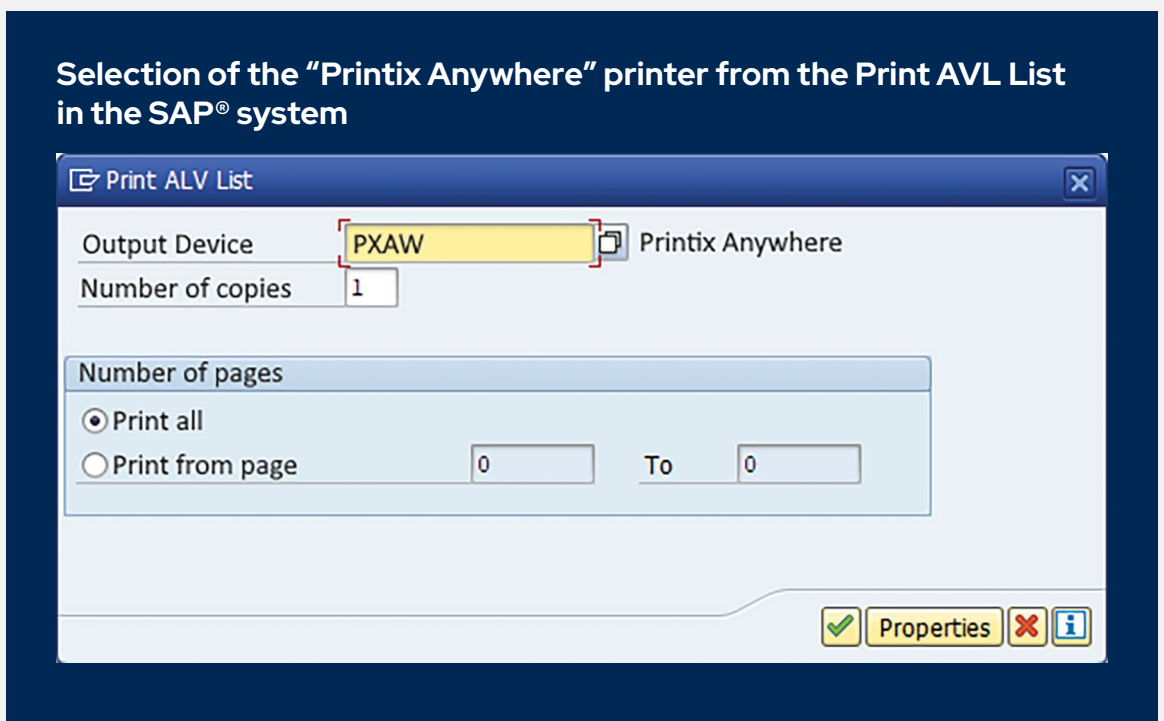
The user starts in the SAP® system, by selecting the print file and choses the Printix Anywhere printer and create the spool request.

Selection of the target printer via app:

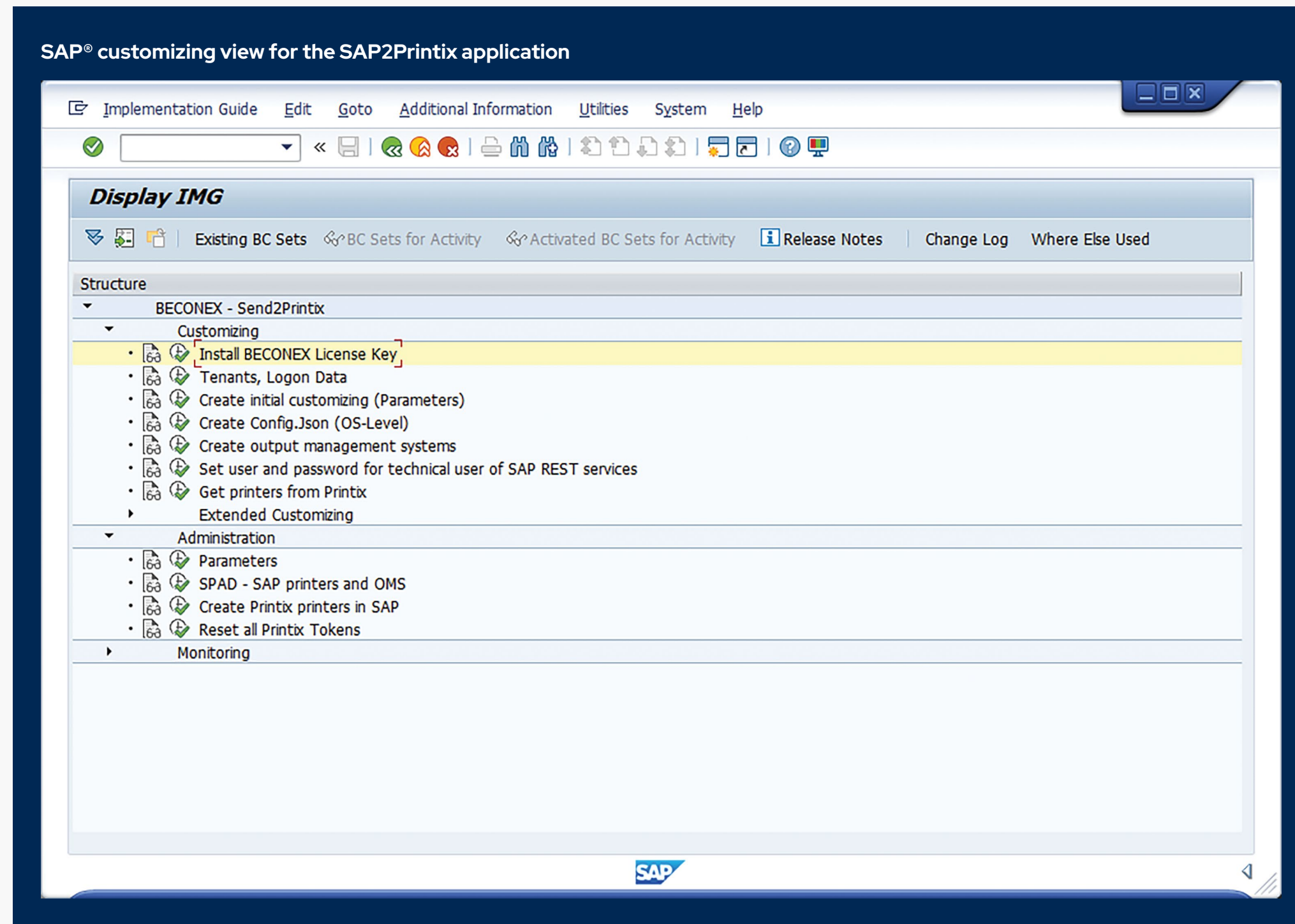
- Open the Printix app on a mobile device
- Select the Print job and the mobile app will automatically search for available printers
- At the bottom right of the page, select Print

Printing by authentication card

- The user provides an authentication card to their desired multifunction Printer
- The user’s print jobs appear on the display and they select the relevant print job

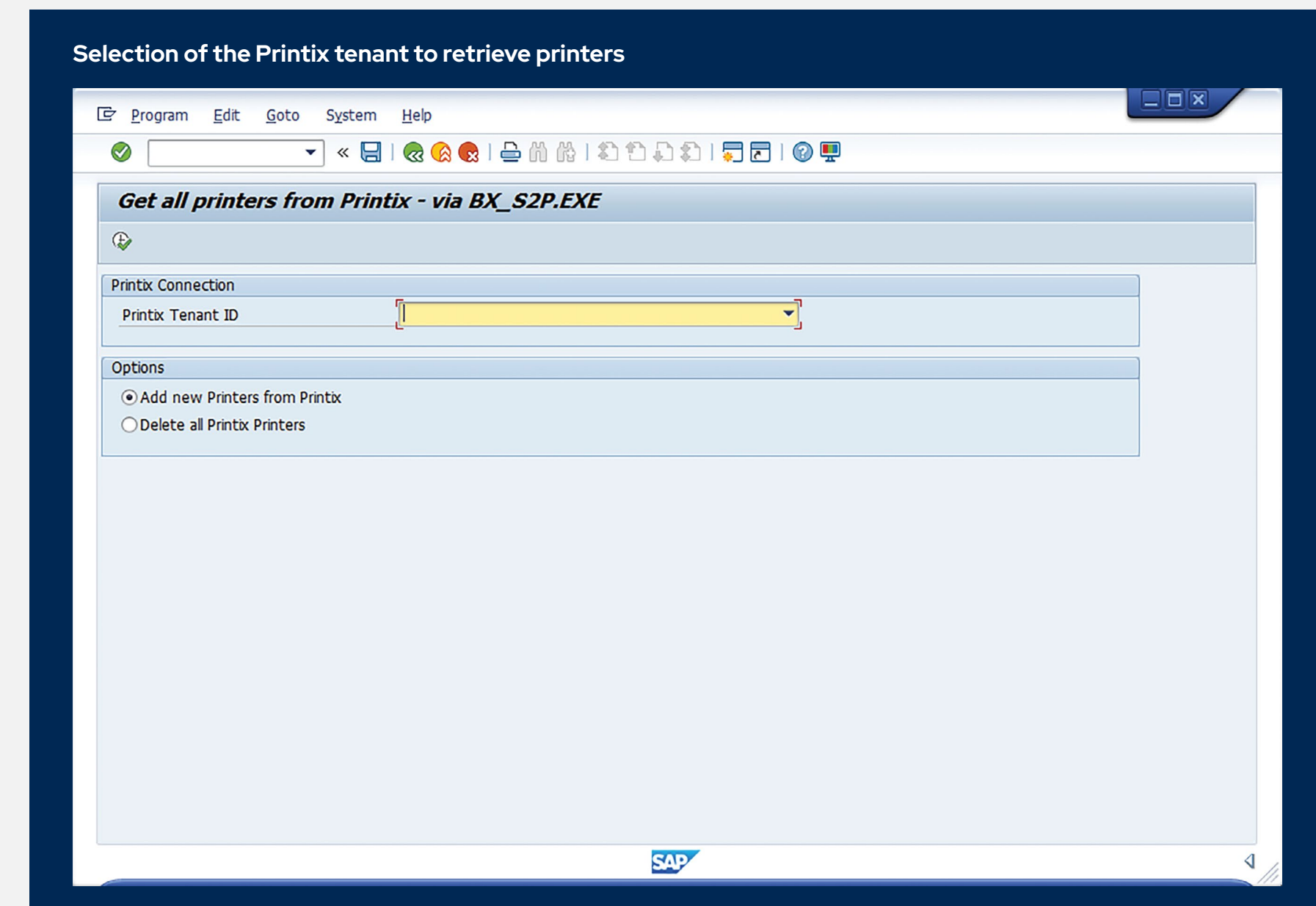
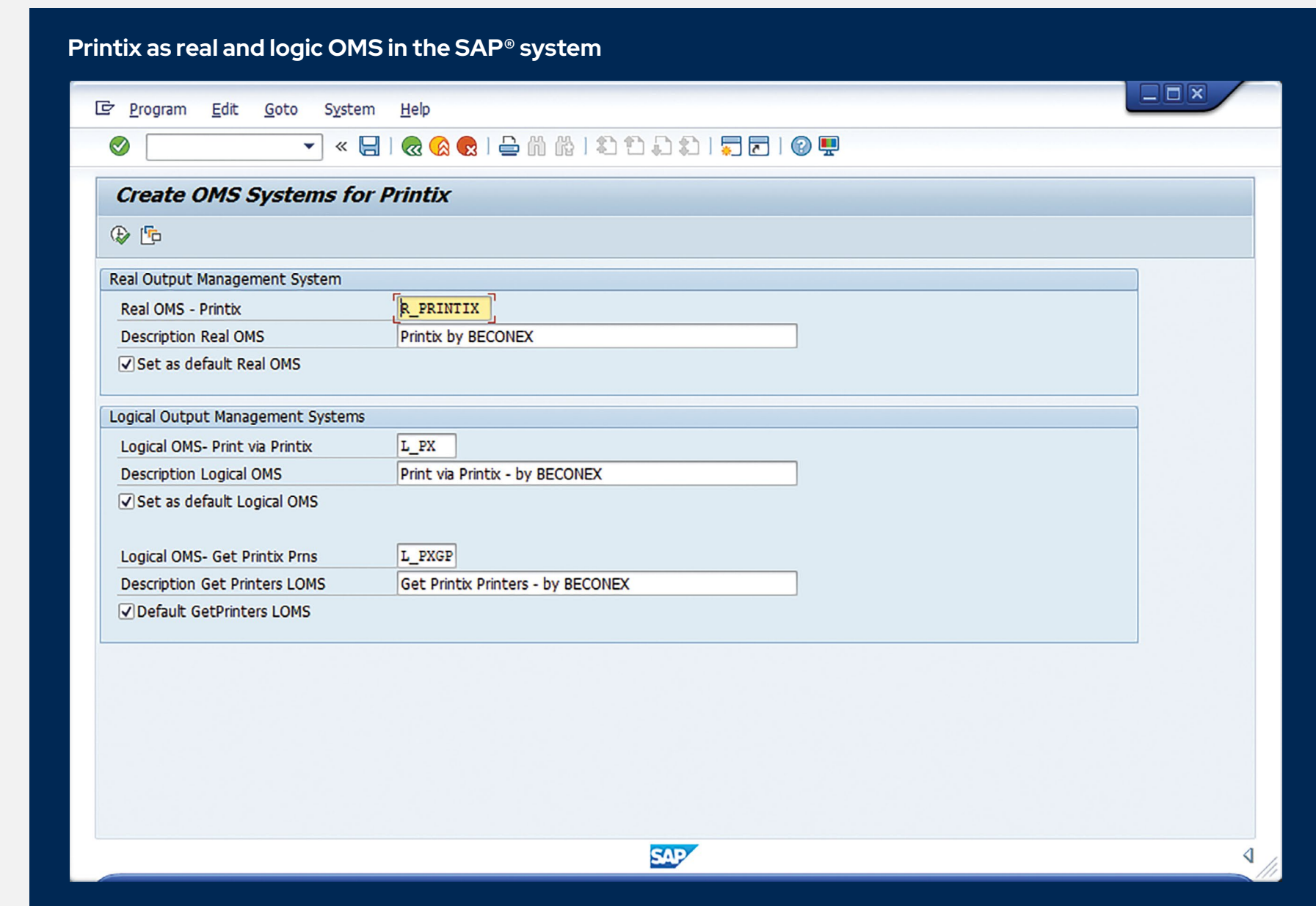


Simple Print Environment Set-Up



Customizing SAP2Printix in the SAP® System

- To set up SAP2Printix in a productive SAP® system, start by obtaining a license for the application
- Proceed to register the Printix tenant. To do this, you will need the following information: "Tenant ID", "Tenant Name" and "Printix Client ID"
- Create initial customisation (Parameters), Create Config.Json (OS-Level), and Create output management systems. The fields will be automatically filled in by the SAP® system
- In addition, you need a technical SAP user to enable communication between SAP and Printix



Manage and Monitor Printers and Spool Requests

Once the customizing steps are completed, you can retrieve the available printers for each Printix client. From here, create the SAP printers:

- Select the Printix tenant to create the SAP printer
- The “Printer Name” field is populated with the description received from the Printix tenant to help identify the desired printer
- Click on “Create SAP Printer” to confirm the selection and the printer will appear in the “SAP created” column

Creation of SAP® printers

Display list

Printix Print Queue Name	Printix Print Queue ID	Printix Short Name	Content type	SAP Short Name	SAP Output Device	SAP Created
HP Officejet Color MFP X585	0fc433b6-f813-4447-87a9-65b6f5cdf361	BNM	application/pdf			
Lexmark MX711	22646236-1d9a-4d29-a9c2-b53e764e642f	ERT	application/pdf			
HP PageWide Color Flow E58650	3cfc98a1-7dcc-48dd-b1aa-644a92560fad	ASD	application/pdf			
HP LaserJet color flow MFP M575	3eb6aeda-274c-4c41-8901-47256decfd65	FGH	application/pdf			
Canon Beconex SW	4c5ed011-30c4-40ac-bc91-1b9cd603386f	GHJ	application/pdf			
KONICA MINOLTA bizhub 4750	c85b1141-2892-4585-a59a-22fea2651e73	CVB	application/pdf			
Brother MFC-L9570CDW series	d9f4422b-f7bb-44ec-be96-22ad621efa65	DFG	application/pdf	DFG	Brother via Printix	X
Brother MFC-L9570CDW series Printer	e8962116-bc74-4866-bdf3-3cf4b7622a92	DFG	application/pdf			

Monitoring and logging data, including print job parameters, REST calls, responses between SAP, the application, and Printix, as well as error and debugging information, can be accessed from the SAP system.

Example of a Status Output Request in the SAP® system

Output Controller: List of Output Requests

Spool no.	OutpReqNo.	User	Time	Output Device	Format	Log	Status
✓ 266663	1	MRE	10:47	Brother via Printix	X_65_80		Compl.

1 Output request displayed
1 Output request completed

Status Description Request 266663-1

Description	Value
Status:	Compl.
Info:	Job submitted successfully to PRINTIX!

Events for Output Request: 266663-1

Job Status	Printout	Pos.	Pages	Time	Message
Completed	Printed correctly				
Being printed	Unknown				
Not printed	Not printed				Processing completed by spool work pr
Not printed	Not printed				Statistics: 19 sec, 3 pages, List, (c
Not printed	Not printed				Request passed to host spool system
Waiting in host spoo	Not printed				Job submitted successfully to PRINTIX
Waiting in host spoo	Not printed				Formatting completed by spool work pr
Formatting	Not printed				Formatting begun by spool work proces
Formatting	Not printed				Processing begun by spool work proces

System Requirements and Installation

SAP2Printix is supported for the following SAP® systems

- SAP® ABAP NetWeaver
- SAP® systems based on ABAP NetWeaver such as SAP® GTS, SAP® EWM, SAP®ECC, SAP® SRM and more
- SAP S/4 HANA® On-Prem and SAP S/4 HANA® Enterprise Cloud

SAP S/4 HANA® Public Cloud is not currently supported. In the case of a SAP S/4H ANA®, the installation of the following software is required:

- NET Runtime 7.0.5 (x64) is always required, either for Windows or for Linux depending on the SAP® system (for SAP S/4 HANA®, .NET for Linux is required)

Installation on SAP2Printix

The SAP2Printix application is installed on the SAP Application Server (DIR_HOME directory) and a transport request must be imported into the SAP® system.

Once completed, proceed with customizing the application.

DIR_HOME directory in the SAP® system

SAP Directories

Name of Directory Parameter	Directory
DIR_ATRA	E:\usr\sap\ED1\DVEBMGS00\data
DIR_BINARY	E:\usr\sap\ED1\DVEBMGS00\exe
DIR_CCMS	E:\usr\sap\CCMS
DIR_CT_LOGGING	E:\usr\sap\ED1\SYS\global
DIR_CT_RUN	E:\usr\sap\ED1\SYS\exe\uc\NTAMD64
DIR_DATA	E:\usr\sap\ED1\DVEBMGS00\data
DIR_DBMS	E:\usr\sap\ED1\SYS\SAPDB
DIR_EXECUTABLE	E:\usr\sap\ED1\DVEBMGS00\exe
DIR_EXE_ROOT	E:\usr\sap\ED1\SYS\exe
DIR_GEN	E:\usr\sap\ED1\SYS\gen\dbg
DIR_GEN_ROOT	E:\usr\sap\ED1\SYS\gen
DIR_GLOBAL	E:\usr\sap\ED1\SYS\global
DIR_GRAPH_EXE	E:\usr\sap\ED1\DVEBMGS00\exe
DIR_GRAPH_LIB	E:\usr\sap\ED1\DVEBMGS00\exe
DIR_HOME	E:\usr\sap\ED1\DVEBMGS00\work
DIR_INSTALL	E:\usr\sap\ED1\SYS
DIR_INSTANCE	E:\usr\sap\ED1\DVEBMGS00
DIR_LIBRARY	E:\usr\sap\ED1\DVEBMGS00\exe
DIR_LOGGING	E:\usr\sap\ED1\DVEBMGS00\log
DIR_MEMORY_INSPECTOR	E:\usr\sap\ED1\DVEBMGS00\data
DIR_PAGING	E:\usr\sap\ED1\DVEBMGS00\data

BECONEX SAP2Printix Summary

BECONEX SAP2Printix is a software that allows users to manage their print jobs from SAP® directly in the cloud, without the need for a server. This enables users to fully transition their system to the cloud without losing any functionality, while enjoying the flexibility, scalability and robustness of cloud-based solutions.

It is easy to integrate existing SAP® systems, whether it's on-prem or cloud-based, with Printix's cloud print management solution in a single-tenant or multi-tenant configuration.

Supported systems include SAP S/4 HANA® On-Prem and SAP S/4 HANA® Enterprise Cloud.

With just a few clicks, users can set up a print environment, configure SAP® printers, and manage print jobs. The user-friendly interface of SAP2Printix makes it easy to manage and monitor printing activities.

Users can use both the "Direct Print" and "Print Anywhere" methods directly from the SAP® system.

Free 30 days Printix trial

Learn more:



[SAP2Printix in the Tungsten Demo Centre](#)

[SAP2Printix Connector on Tungsten Marketplace](#)



<https://beconex.com/en/serverless-printing-sap-printix/>

<https://www.TungstenAutomation.com/products/printix>



About Tungsten Automation

Tungsten Automation, formerly Kofax, is the global leader in intelligent automation solutions with a trusted legacy of nearly 40 years, with a team of 2,000+ employees in 40 countries, serving 25,000+ global customers. Our dedication to innovation and customer success has earned us industry recognition, including being named a leader in Intelligent Automation (IA), Intelligent Document Processing (IDP) and Process Orchestration by top analysts. We are trusted to help businesses gain unprecedented efficiencies and reduce costs through AI-powered workflow automations that propel their businesses into the future.

To learn more, visit www.TungstenAutomation.com

www.TungstenAutomation.com

