

Best practice data migration to set the foundations for RISE with SAP and maximising AI potential

Robert Reuben,
Proceed Group



About Proceed

We are experts in **SAP archiving, decommissioning, content management, and GDPR** for enterprise businesses

14

Offices worldwide

900 +

Customer projects worldwide

Over
22 YRS

Experience as leading specialists

Proceed and SAP



- SAP Gold partner
- Global SAP Master Services Agreement
- Taken 100+ SAP customers to SAP HANA, saving them over £150m on the way
- Delivered the first SAP ILM Cloud projects worldwide
- Now helped enable and accelerate many SAP customers move to RISE
- More SAP archiving specialists than any other consultancy
- Proceed Cella on the SAP Store

We have built an extensive partner network including:

SAP, OpenText, Amazon Web Services, Microsoft Azure, EY, KPMG, Syniti, T-Systems, Xmateria, SoftwareOne and more

opentext™ | Partner
Services Silver



SAP Data Migration Best Practice



- Minimise costs
- Faster migration
- Cleaner, more agile, IT landscape
- Reduced energy consumption
- Delivers for IT and business
- Relevant data accessible for BI & AI



SAP Data Migration Best Practice



Agenda

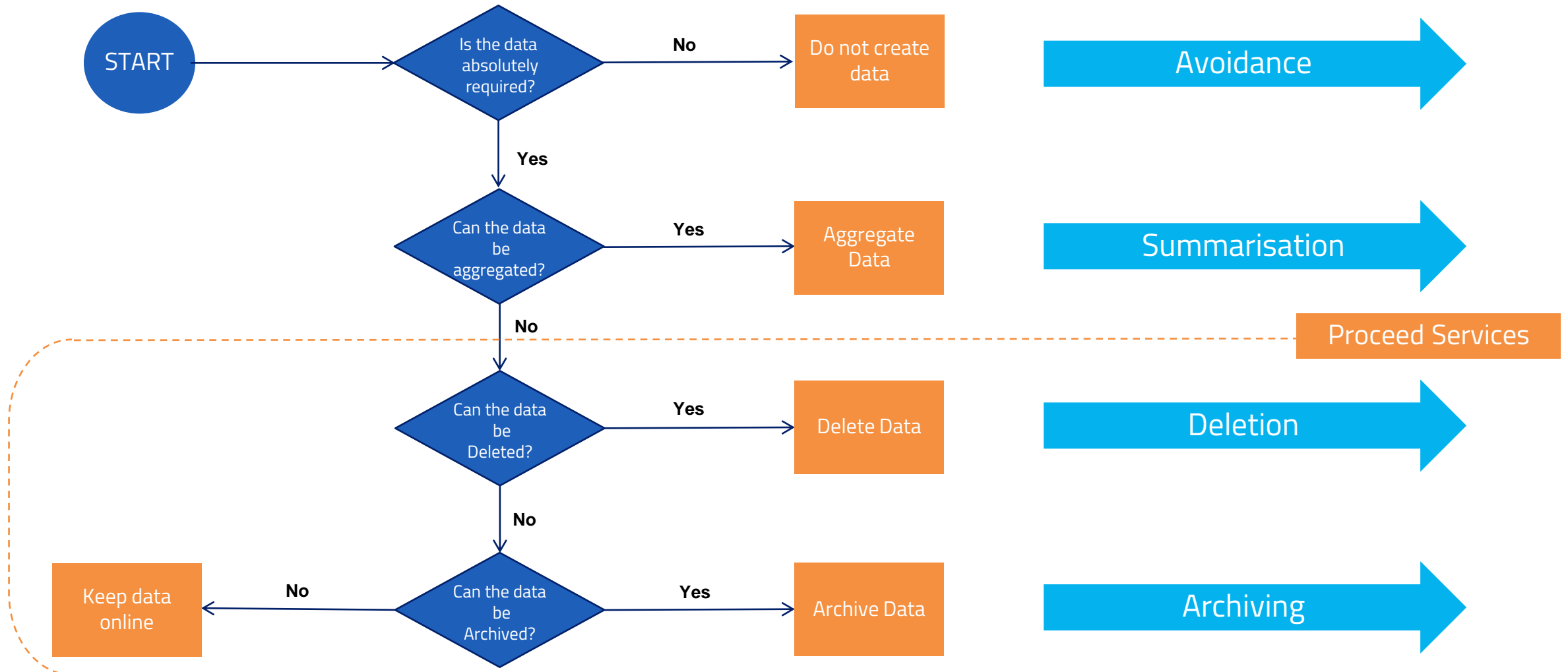
- Data Retention Strategy
- Reducing Data Volumes
- Migrating Unstructured Data
- Retaining Legacy Data
- Business Engagement
- Next Steps





Data Retention Strategy (part 1)

Data Retention Strategy: Production Systems

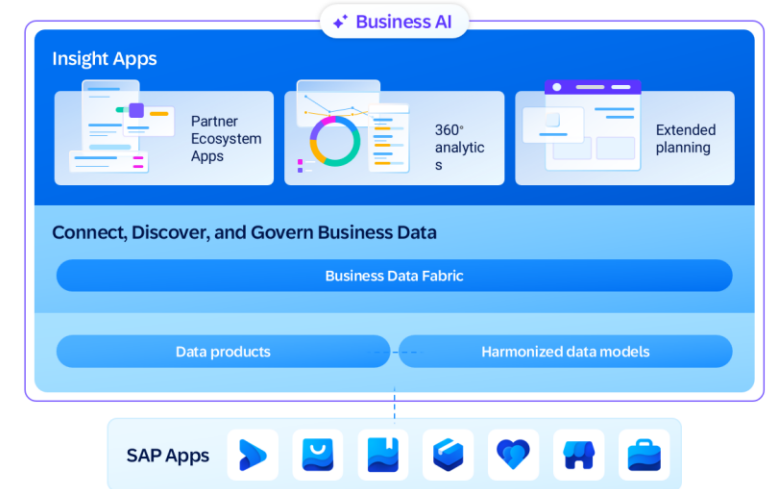
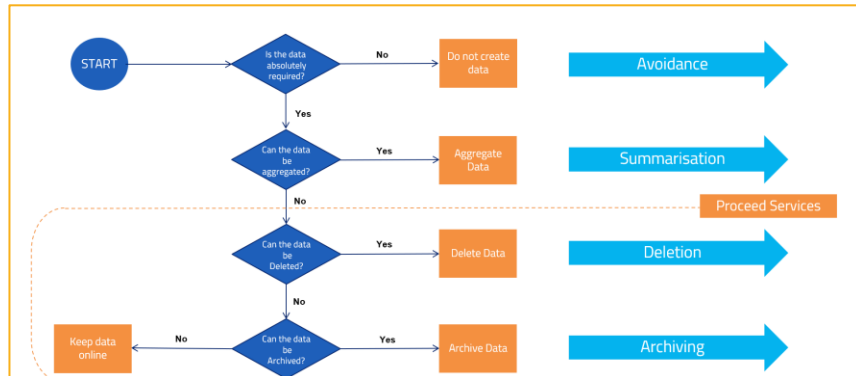


Data Retention Strategy: keeping data accessible



Your Analytics Platform, e.g.

SAP Business Data Cloud



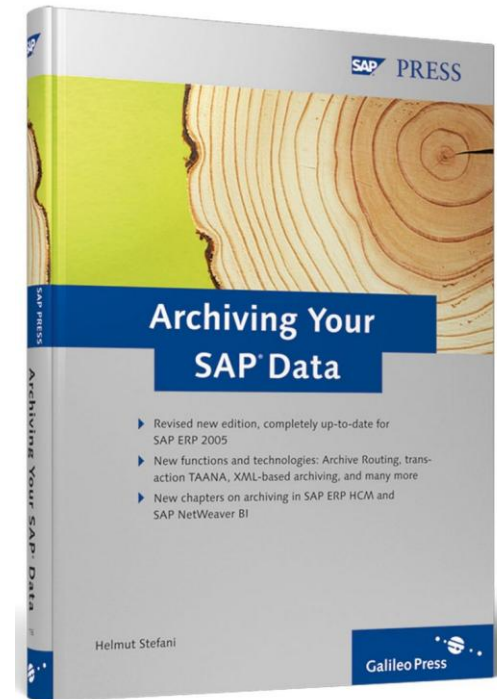


Reducing Data Volumes

Reducing Data Volumes: Archive ECC or S/4HANA

SAP archiving

- Strategic SAP solution for Data Volume Management
- Built into SAP ECC and SAP S/4HANA
- Can deliver over 50% reduction in DB size
- Housekeeping, technical archiving, functional archiving
- SAP ILM adds retention management, GDPR functionality
- Further benefits: operational, compliance



Case Study

Croda International

CRODA

Industry: Chemicals

Application: Rightsizing & Archiving

Project summary:

- Reduced Oracle database size on SAP ECC system for migration to HANA in Microsoft Azure
- Decommissioned legacy SAP content server and migrate documents to SAP IQ
- Implemented SAP ILM to reduce TCO, business risk and data volumes



Migrating our SAP ECC6 system on Oracle to Business Suite on HANA was challenging because of the high operational cost of running a 3.4TB database size in memory. Reducing the database size to below 0.5TB in less than 3 months paid for the archiving project with an ROI of below 2 years.

PAUL KNOESTER, GROUP IT OPERATIONS DIRECTOR, CRODA INTERNATIONAL PLC



PROJECT STATS

2.9TB

Database size reduced
By the archiving project

>80%

Data archived on average
for different archiving objects

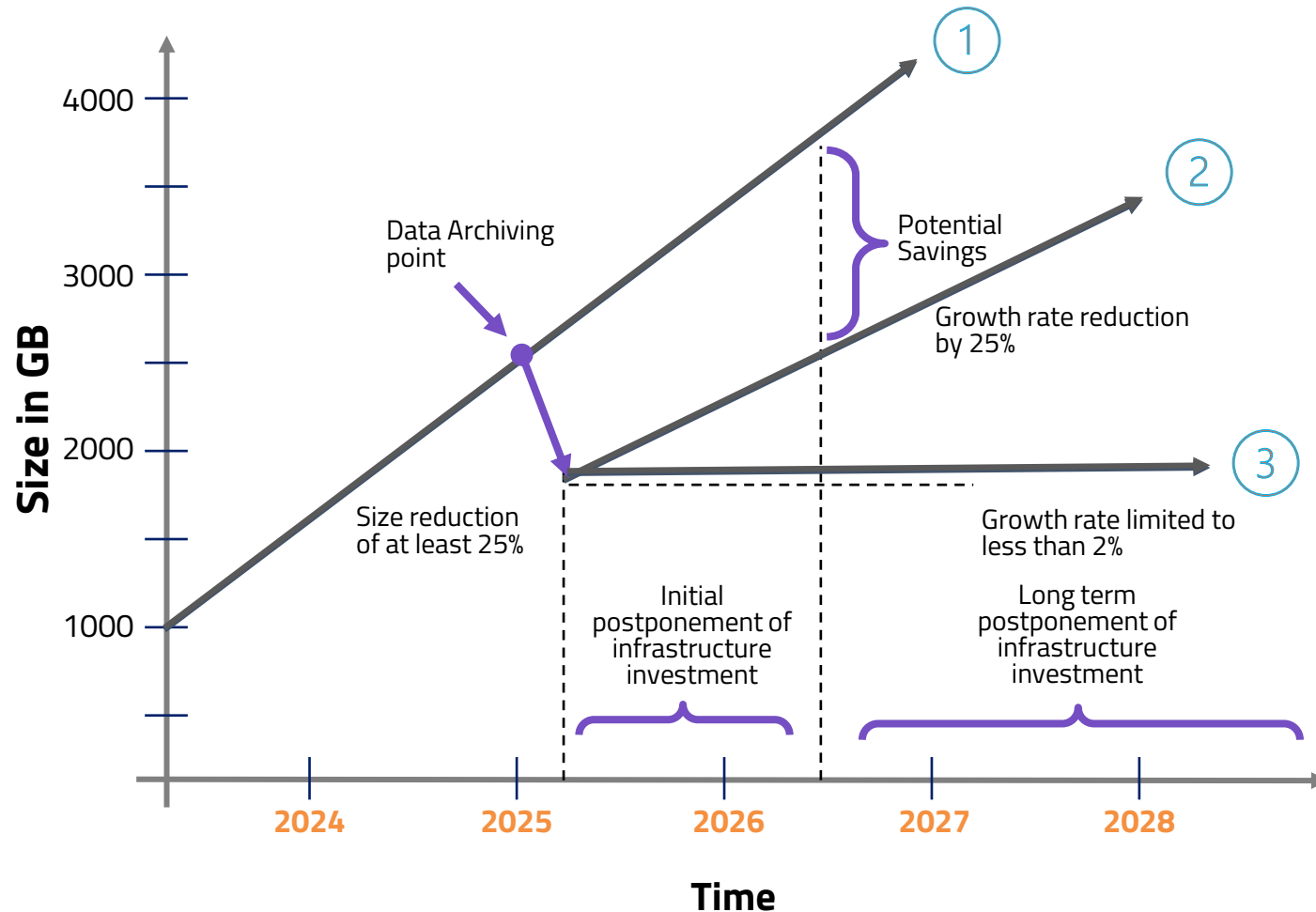
Reducing Data Volumes: Archive ECC or S/4HANA



SAP archiving:
Example customer
success stories in
different industries

Type of Organisation	DB Size before Rightsizing in GB's	DB Size after Rightsizing in GB's	Saving in GB's	Saving %
Bank	42,890	19,570	23,320	54 %
Broadcaster	22,800	8,150	14,650	64 %
Chemicals	5,620	2,300	3,320	59 %
CPG	13,130	6,380	6,750	51 %
Defence	16,750	7,540	9,210	55 %
Fashion	8,120	4,300	3,820	47 %
Food	42,670	13,980	28,690	67 %
Manufacturer	27,180	10,230	16,950	62 %
Public Sector	16,980	7,120	9,860	58 %
Publisher	6,170	4,090	2,080	34 %
Retail	29,890	14,280	15,610	52 %
Utility	29,400	10,320	19,080	65 %

Reducing Data Volumes: Archive ECC or S/4HANA



Scenarios

- 1** Without data archiving
Linear increase with increased costs and business risk
- 2** With data archiving project
Significant reduction in data volume and growth
- 3** With retention management and regular archiving
Reduction in growth management and reduction in archive volume

How to archive SAP data

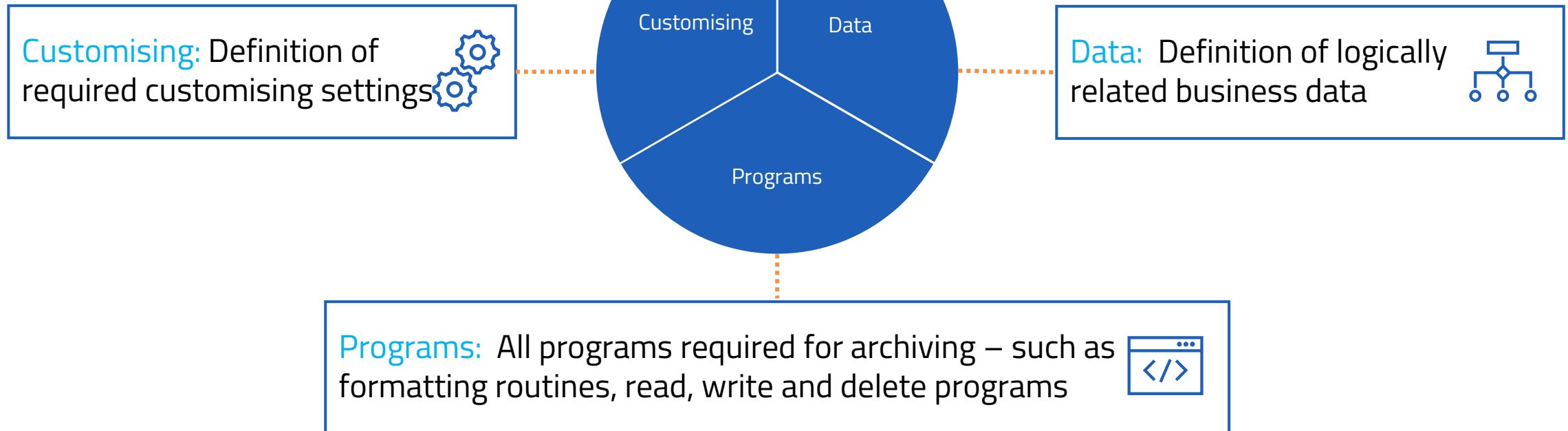


There is only ONE way to archive SAP data



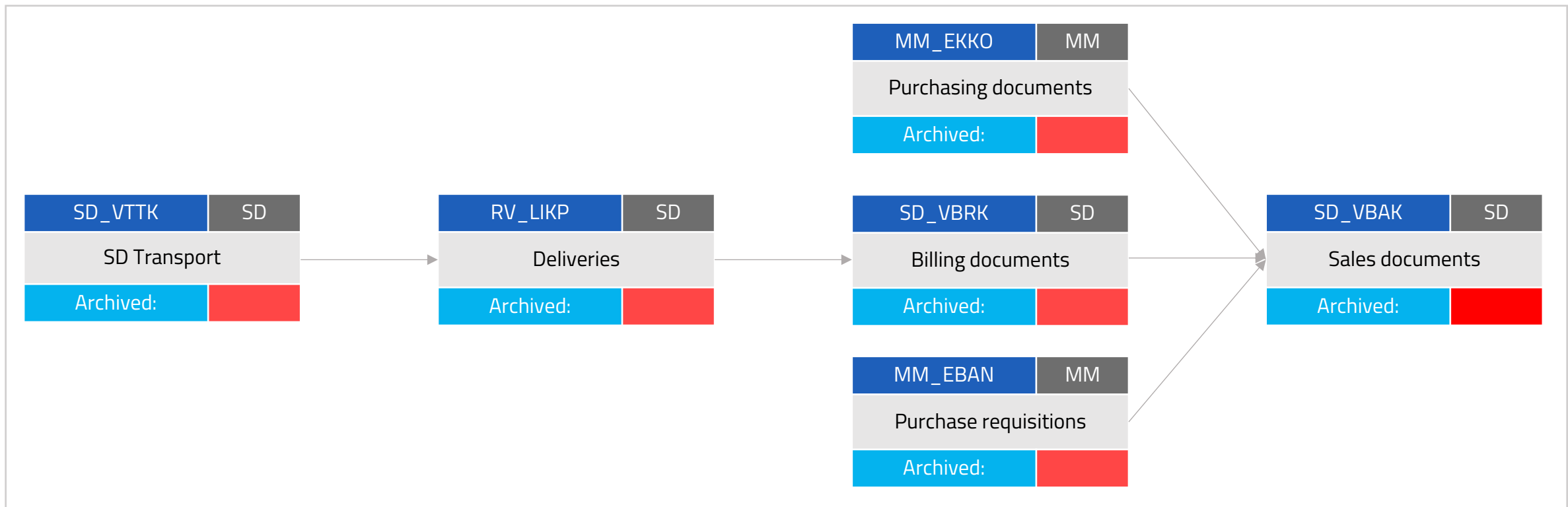
Using SAP Archiving Objects

SAP Archiving Object contains



SAP data archiving: object dependency

- SAP archiving is complex due to object dependencies
- This diagram shows that sales documents should only be archived after billing documents, purchase requisitions and purchase orders



SAP data management solutions



Archiving, Aging or ILM

		S/4HANA Cloud	S/4HANA (on prem and HEC)	Business Suite / ECC	Data Volume Mgmt	Retention rule flexibility	Storage Options	Transaction coverage	Object coverage	Blocking & Deletion	System Decomm
Manage memory footprint in S/4HANA Volume management of non-operational data Advanced volume & lifecycle management: <ul style="list-style-type: none"> ▪ policies & rules ▪ blocking & deletion ▪ system decommissioning 	Aging				 Memory footprint reduction only	 Evict non-operational objects from memory	 Disk-based storage by default		 Primarily for technical objects		
	Data Archiving					 Old data of closed business processes	 Filesystem / disk / 3 rd party	 Transactions that support archive obj			
	Information Lifecycle Management	 Only for end-of-purpose, blocking & deletion						 Filesystem / 3 rd party / SAP IQ / MS Azure / Hadoop / HANA	 Transactions that support ILM-enabled archive obj		

Reducing Data Volumes: Plan to implement data tiering



BW/4HANA:



Hot
Data

This tier is used to store mission-critical data for real-time processing and real-time analytics.
Data is retained in-memory of the SAP HANA database.



SAP HANA
In-Memory Store



Warm
Data

This tier is used to store data with reduced performance SLAs, which is less frequently accessed.
Data is stored on a lower cost storage tier, managed as a unified part of the SAP HANA database.



Extension Nodes or
Native Storage Extension



Cold
Data

This tier is used to store voluminous data for sporadic or very limited access. Data is stored on lower-cost storage tiers, like SAP IQ, managed separately from the SAP HANA database, but still accessible at any time.



Data Tiering with
External Storage

BW/4HANA: <https://me.sap.com/notes/2517460> and
<https://pages.community.sap.com/topics/bw4-hana>

S/4HANA: <https://me.sap.com/notes/2973243>

Migrating Unstructured Data

Migrating Unstructured Data

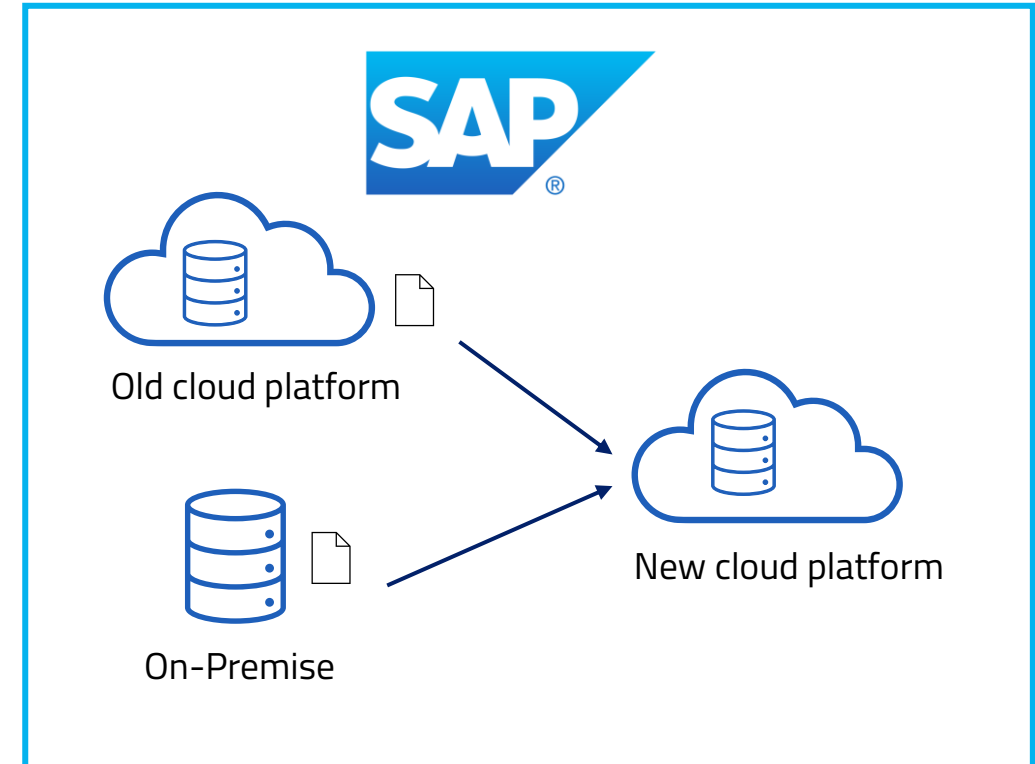


Benefits:

- **Cost savings:** reduced maintenance costs by rationalising the content server landscape
- **Simplify business processes and increase productivity:** optimise storage of documents in SAP by effectively structuring document storage and reviewing workflows

Proceed solution:

- Proceed Content Server Migration software
- Content Migration project



Case Studies:

- European travel company, Global technology products business, Global consumer products company, and more ...

Retaining Legacy Data Decommissioning Legacy Systems

Retaining Legacy Data



Historical, Read-Only Data

- Must be retained for audit, legal, regulatory purposes
- Data retention rules by country, type of data
- Ongoing business value

Legacy Enterprise Systems

- From: Greenfield migrations, M&A, IT lifecycle.
- Significant costs for annual support, skills, infrastructure
- Risks: unsupported software and hardware, lack of security updates, high power use, lack of skills, ...
- Examples: SAP ECC after greenfield migration to S/4HANA
- SAP HR after migration to SFSF

Options

- Keep legacy systems **X**
- 'Hibernate' legacy systems **X**
- Dedicated legacy data solution

Solutions

- Requirements: secure storage of historical data, reporting options to cover user needs, ease of use, cloud deployment
- Proceed Cella, SAP ILM.

After Greenfield Migration: keep legacy data, not legacy systems



Solution options for historical data

SAP Information Lifecycle Management (ILM)

- SAP solution for live archiving, legacy system decommissioning, and GDPR
- For legacy systems uses the ILM Retention Warehouse
- Needs a storage solution, e.g. IQ or OpenText
- And SAP SLT for data extraction
- Available on-premise and in SAP Private Cloud.
- Reports need to be created (SQVI, ABAP, or BW)
 - Proceed have a reporting framework for this
- For SAP and non-SAP legacy apps

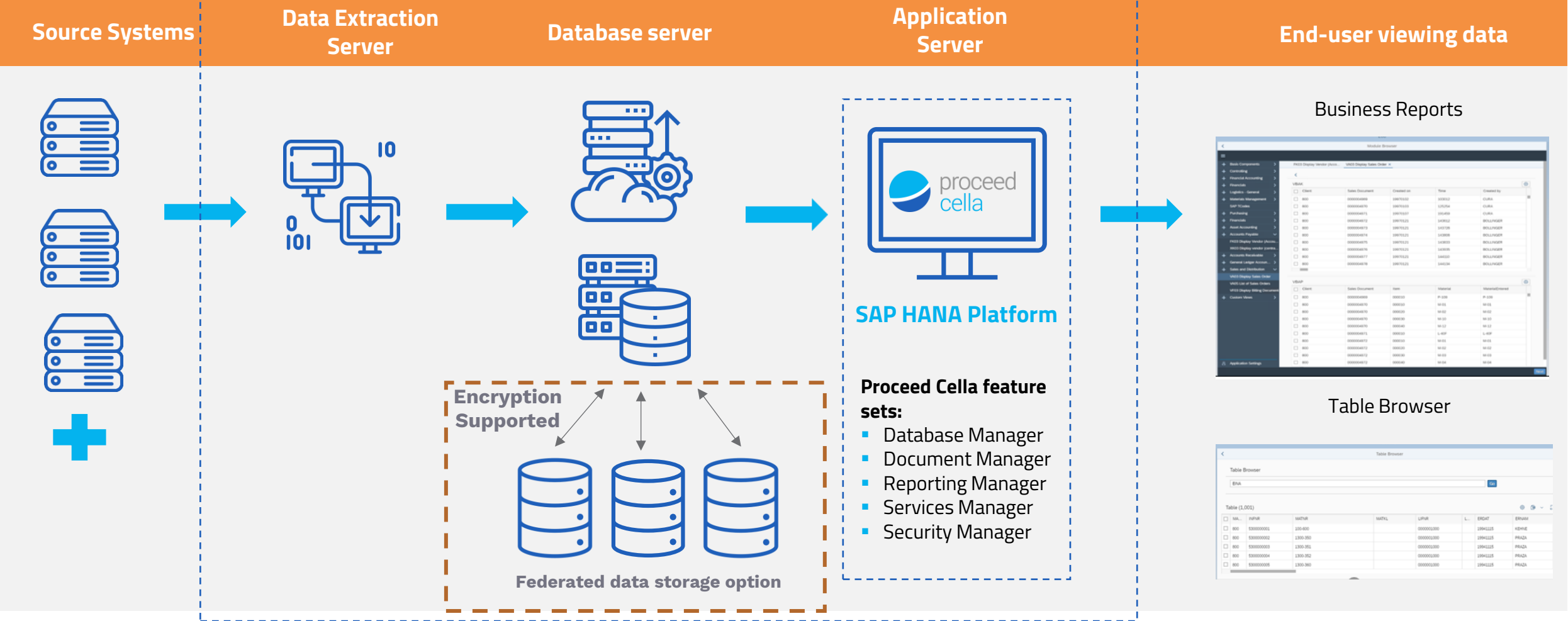
Proceed Cella

- Launched in 2020, in use by 50+ customers
- Includes data extraction, secure storage, reporting and data retention management
- SAP UI5 / Fiori user experience
- Library of standard reports included and further reports can be created using included Neptune report writer
- Can be deployed on-premise, on customer's hyperscaler, or as a SaaS solution
- For SAP and non-SAP legacy apps

Proceed Cella: architecture



Proceed Cella



Case Study

Nouryon

Nouryon

Industry: Chemicals

Application: Decommissioning | Proceed Cella

Project summary:

- Nouryon needed to access the business's historical information and data post-acquisition of CP Kelco's CMC business
- Proceed Group helped them manage compliance and provide information for necessary future audits with the help of Proceed Cella
- The tool was able to extract 1.6 TB of data in just 12 days, providing Nouryon with a secure and efficient way to archive their historical data



We have concluded a very successful project with Proceed, allowing us to remain in compliance with the necessary governing bodies. The project was complex, but with the support of the Proceed team we have been able to decommission the data and hold on to relevant information that's required – whilst completing the project in a limited number of days.

JAN REEUWIJK, NOURYON



PROJECT STATS:

1.6^{TB}

Of data extracted in just 12 days

UP TO
80%

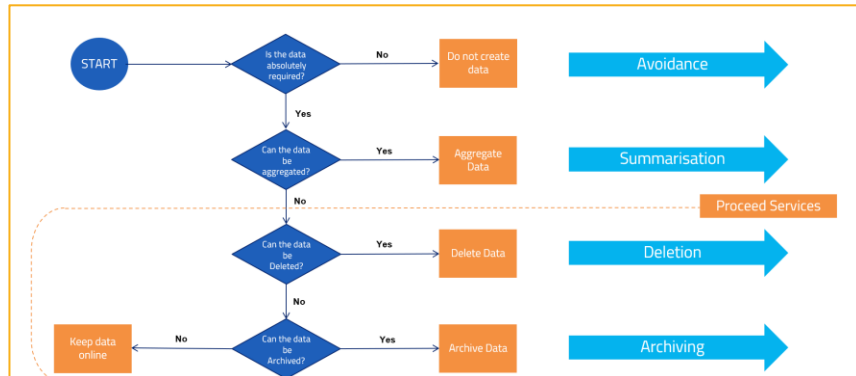
Reduction in total cost of ownership

Data Retention Strategy: the bigger picture

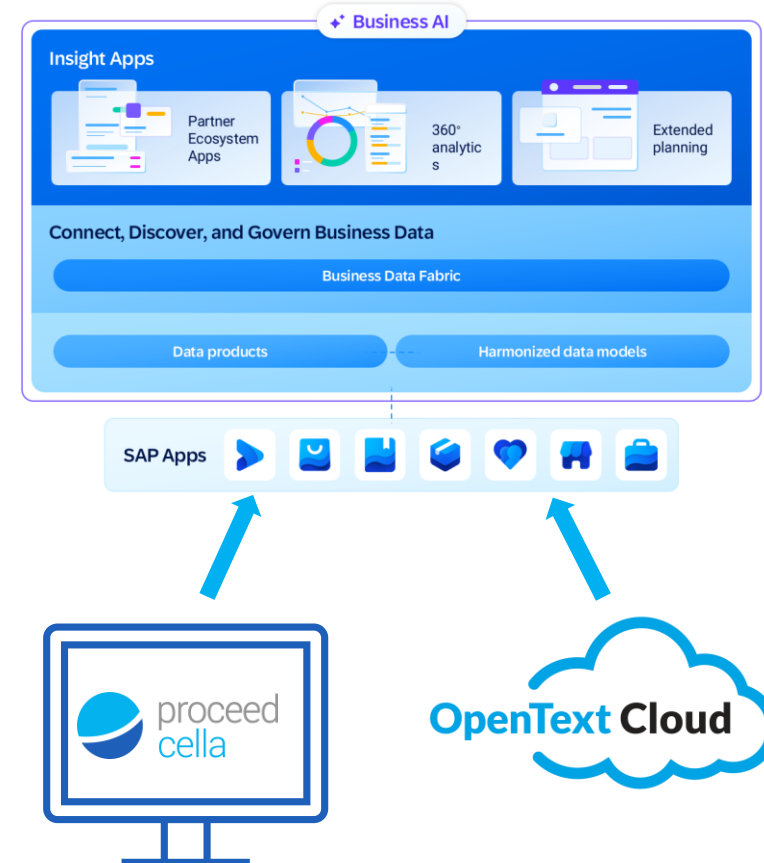


Your Analytics Platform, e.g.

SAP Business Data Cloud



Retention and Live Reporting



Business Engagement

Business Engagement



What's required:

- Upfront Workshops
 - Data in scope
 - Data retention rules
 - Reports required (decom project)
- User Acceptance Testing

Suggested:

- Engage early and through the project
- Ensure they understand the challenge and agree it's a priority
- Ensure the business case meets the CFO's criteria

Next Steps

Where to start?



Proceed Data Assessment:

- Provides project sizing for live archiving and legacy system projects
 - No charge
 - Uses the output from two standard SAP transactions
 - Proceed will analyse and present our findings back to you

Learn more about the options:

- Talk to us at the event or afterwards
 - How we have helped other SAP customers
 - Solution demo
 - The business case

PROCEED RIGHTSIZING DATA ASSESSMENT

A graphic for the Proceed Rightsizing Data Assessment featuring a dark blue background with a network of glowing purple and blue nodes and lines, creating a sense of data flow and connectivity.

T: +44 (0) 121 729 5058
info@proceedgroup.com
www.proceedgroup.com

Regus House, Fort Dunlop,
Fort Parkway
Birmingham,
B24 9FE, UK

The Proceed logo and the SAP logo are displayed in the bottom right corner of the graphic.

PROCEED SAP DECOMMISSIONING ASSESSMENT

A graphic for the Proceed SAP Decommissioning Assessment featuring a dark blue background with a network of glowing cyan and blue nodes and lines, creating a sense of data flow and connectivity.

T: +44 (0) 121 729 5058
info@proceedgroup.com
www.proceedgroup.com

Regus House, Fort
Dunlop, Fort Parkway
Birmingham,
B24 9FE, UK

The Proceed logo and the SAP logo are displayed in the bottom right corner of the graphic.



YOUR INDEPENDENT SAP COMMUNITY