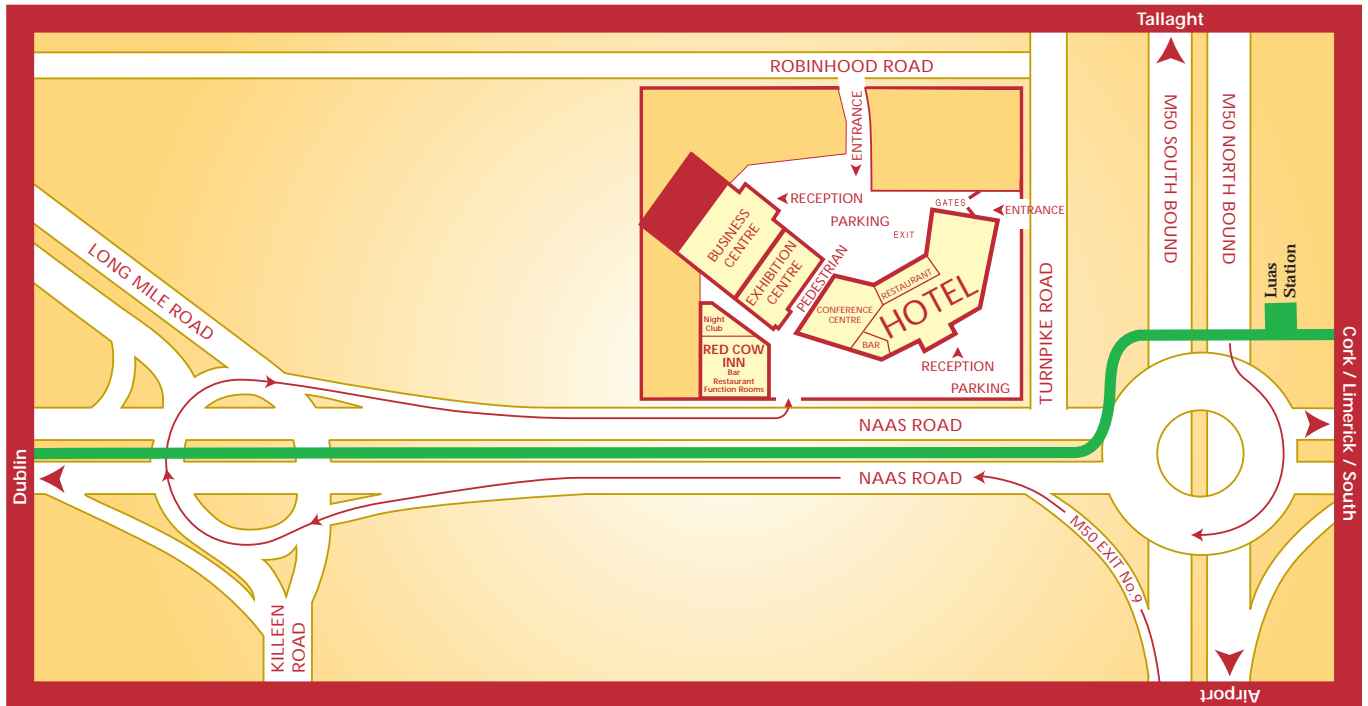




Red Cow Complex, Naas Road, Dublin 22.
 Telephone +353 1 4593650 Facsimile +353 1 4591588
 Email info@morangroup.ie www.redcowhotel.com

Complex Layout & Floor Plans



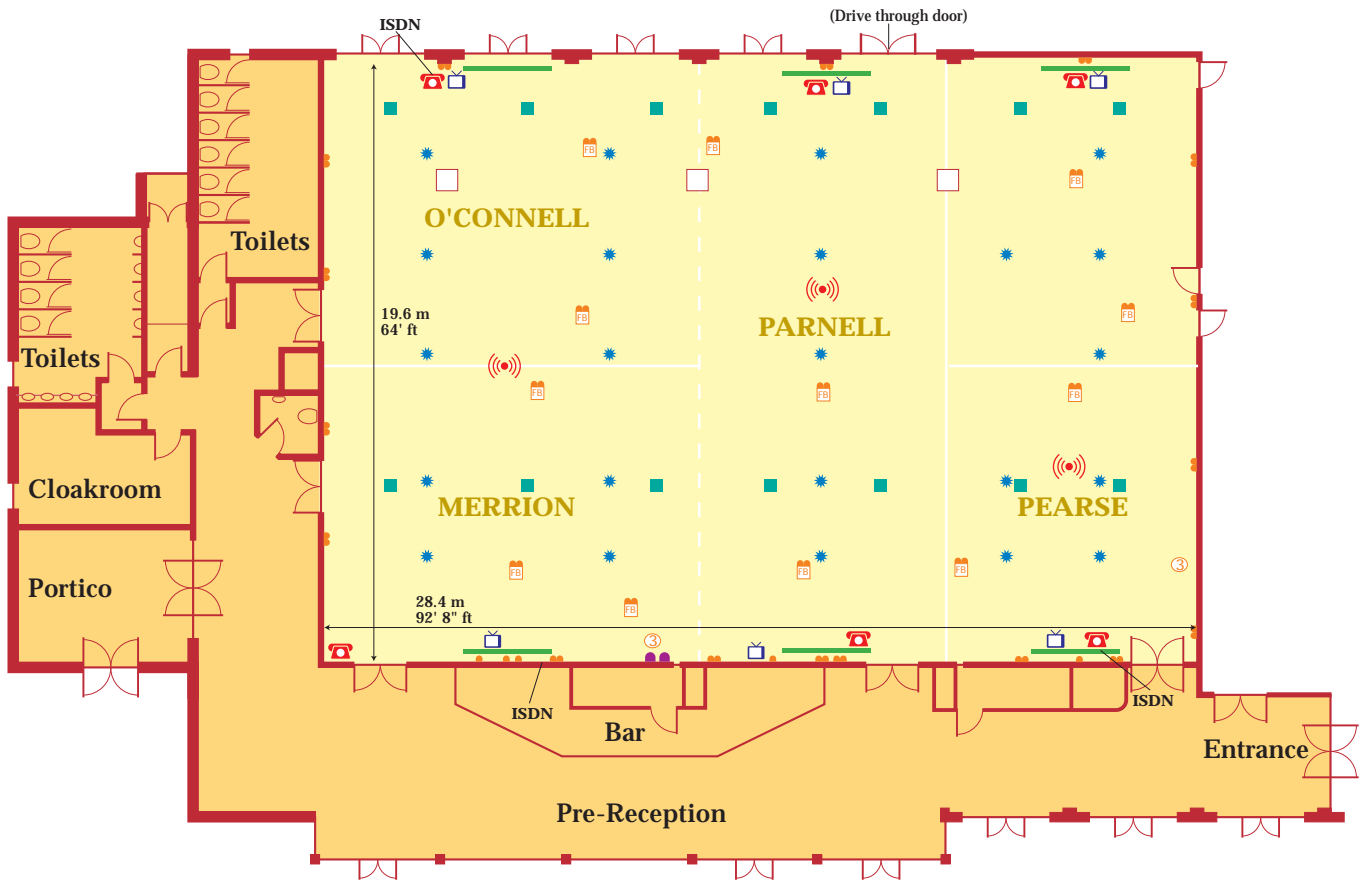
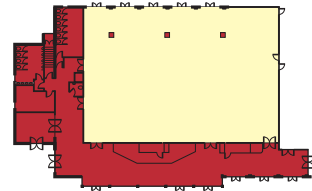
LEGEND

- Luas Line
- Luas Station
- Road
- Route to Complex

The hotel is situated beside the junction of the N7 (Naas Road) and the M50. Conveniently located for easy access to Dublin international airport and main thoroughfares to Cork, Limerick and Waterford.

We accept no responsibility for any inaccuracies that may occur on the following floor plans

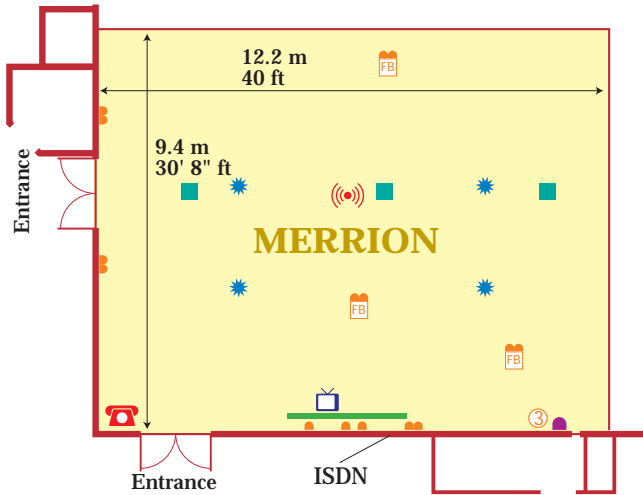
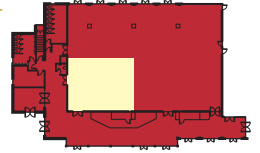
Conference Suite



LEGEND	
	Telephone / ISDN
	Wireless Broadband Internet Access
	Television Outlet
	Speaker
	Cassette Unit / AC
	Twin Socket
	Single Socket
	3 Phase 380volt 63amp
	Floorbox
	63A SP+N Socket
	Automatic Roll Down Screens

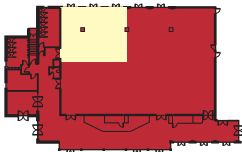
LAYOUT	NUMBER
Theatre	720
Classroom	350
U-Shape	150
Lunch/Dinner	550
Cocktail Reception	800
DIMENSIONS IN FEET 64' x 92' 8"	
DIMENSIONS IN METRES 19.6 x 28' 4"	
CEILING HEIGHT 3.25 m / 10' 8" ft	

Merrion Suite



LAYOUT	NUMBER
Theatre	120
Classroom	60
U-Shape	35
Boardroom	40
Lunch/Dinner	80
Cocktail Reception	175
Dimensions in feet	30' 8" x 40'
Dimensions in metres	9.4 x 12.2
Ceiling height	3.25 m / 10' 8" ft

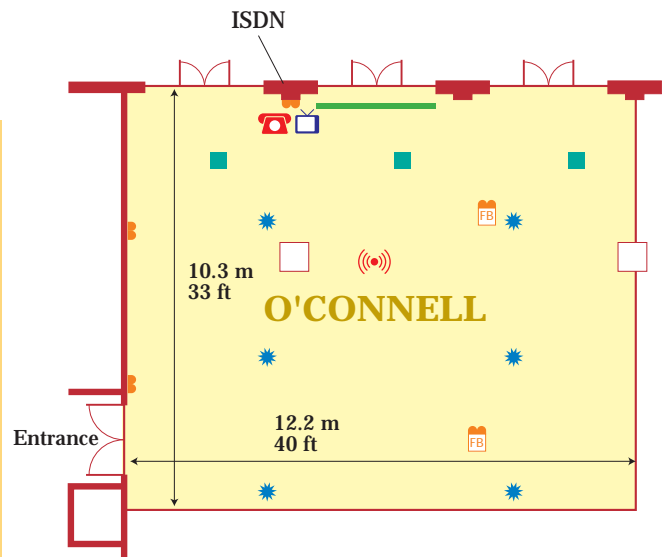
LEGEND	
	Telephone / ISDN
	Wireless Broadband Internet Access
	Television Outlet
	Speaker
	Cassette Unit / AC
	Twin Socket
	Single Socket
	3 Phase 380V 63A Socket
	Floorbox
	63A SP+N Socket
	Automatic Roll Down Screens



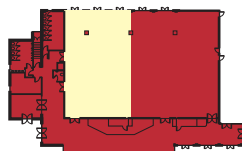
O'Connell Suite

LAYOUT	NUMBER
Theatre	120
Classroom	50
U-Shape	35
Boardroom	35
Lunch/Dinner	80
Cocktail Reception	175
Dimensions in feet	33' x 40'
Dimensions in metres	10.3 x 12.2
Ceiling height	3.25 m / 10' 8" ft

LEGEND	
	Telephone / ISDN
	Wireless Broadband Internet Access
	Television Outlet
	Speaker
	Cassette Unit / AC
	Twin Socket
	Single Socket
	3 Phase 380V 63A Socket
	Floorbox
	63A SP+N Socket
	Automatic Roll Down Screens

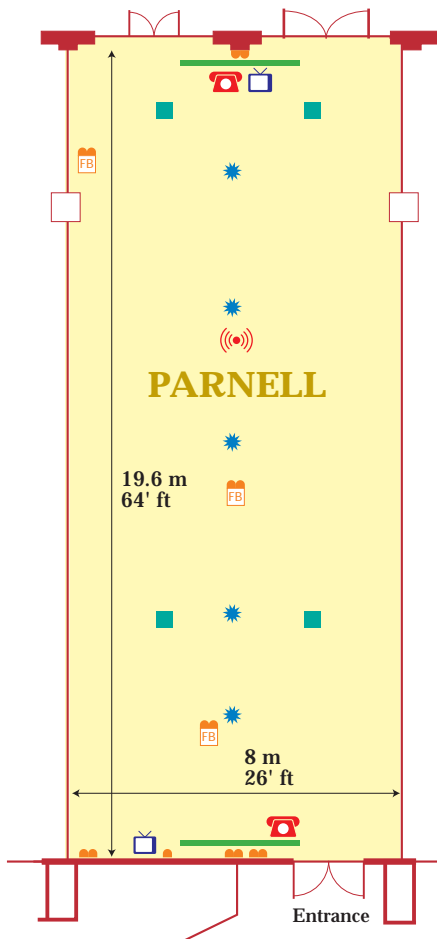
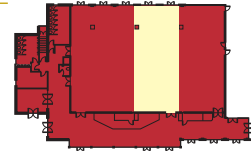


Merrion & O'Connell Suite



LAYOUT	NUMBER
Lunch/Dinner	180
Cocktail Reception	350

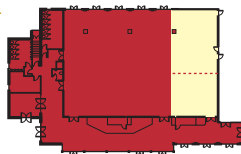
Parnell Suite



LAYOUT	NUMBER
Theatre	180
Classroom	80
U-Shape	40
Boardroom	50
Lunch/Dinner	100
Cocktail Reception	200
Dimensions in feet	64' x 26'
Dimensions in metres	19.6 x 8
Ceiling height	3.25 m / 10' 8" ft

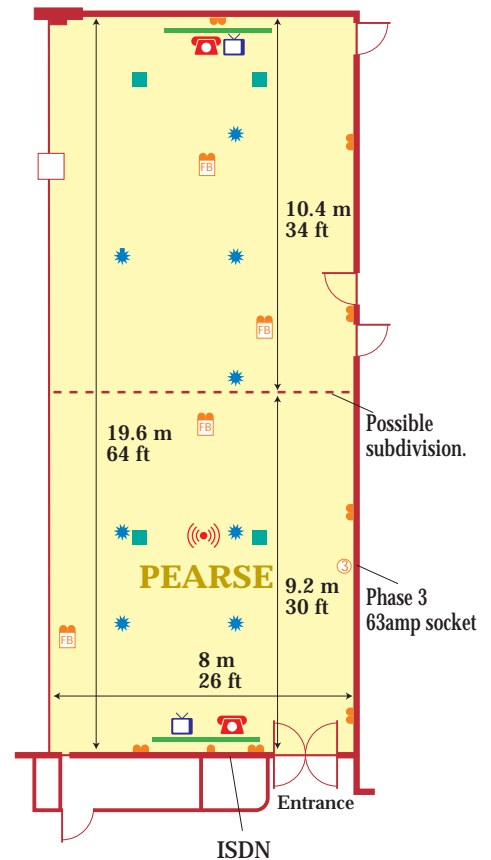
LEGEND	
	Telephone / ISDN
	Wireless Broadband Internet Access
	Television Outlet
	Speaker
	Cassette Unit / AC
	Twin Socket
	Single Socket
	3 Phase 380V 63A Socket
	Floorbox
	Automatic Roll Down Screens

Pearse Suite

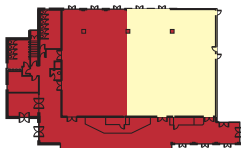


LAYOUT	NUMBER
Theatre	180
Classroom	80
U-Shape	40
Boardroom	50
Lunch/Dinner	100
Cocktail Reception	200
Dimensions in feet	64' x 26'
Dimensions in metres	19.6 x 8
Ceiling height	3.25 m / 10' 8" ft

LEGEND	
	Telephone / ISDN
	Wireless Broadband Internet Access
	Television Outlet
	Speaker
	Cassette Unit / AC
	Twin Socket
	Single Socket
	3 Phase 380V 63A Socket
	Floorbox
	Automatic Roll Down Screens



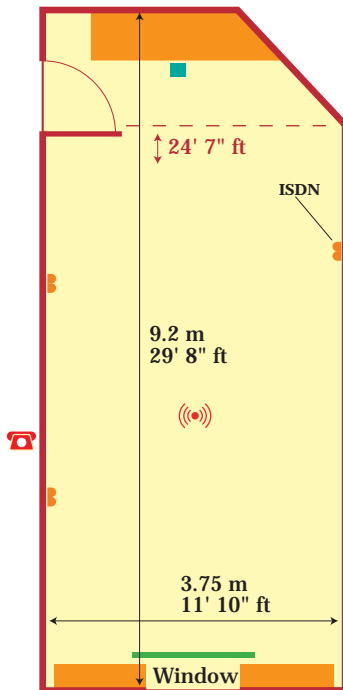
Pearse & Parnell Suite



LAYOUT	NUMBER
Lunch/Dinner	250
Cocktail Reception	450

Boardrooms

Curragh Room



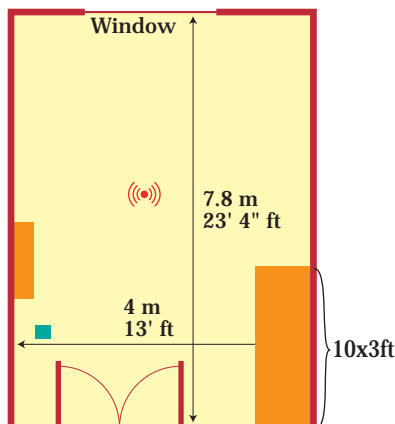
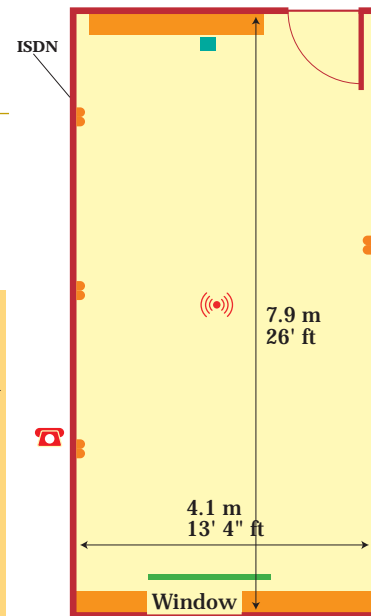
LAYOUT	NUMBER
Boardroom	16
Dimensions in feet	29' 8" x 11' 10"
Dimensions in metres	9.2 x 3.75
Ceiling height	2.6 m / 8' 5" ft

LEGEND	
	Telephone
	Wireless Broadband Internet Access
	Cupboard
	Screen
	Twin Socket
	Cassette Unit / AC

Boardroom

LAYOUT	NUMBER
Boardroom	14
Dimensions in feet	26' x 13' 4"
Dimensions in metres	7.9 x 4.1
Ceiling height	2.6 m / 8' 5" ft

LEGEND	
	Telephone
	Wireless Broadband Internet Access
	Cupboard
	Screen
	Twin Socket
	Cassette Unit / AC

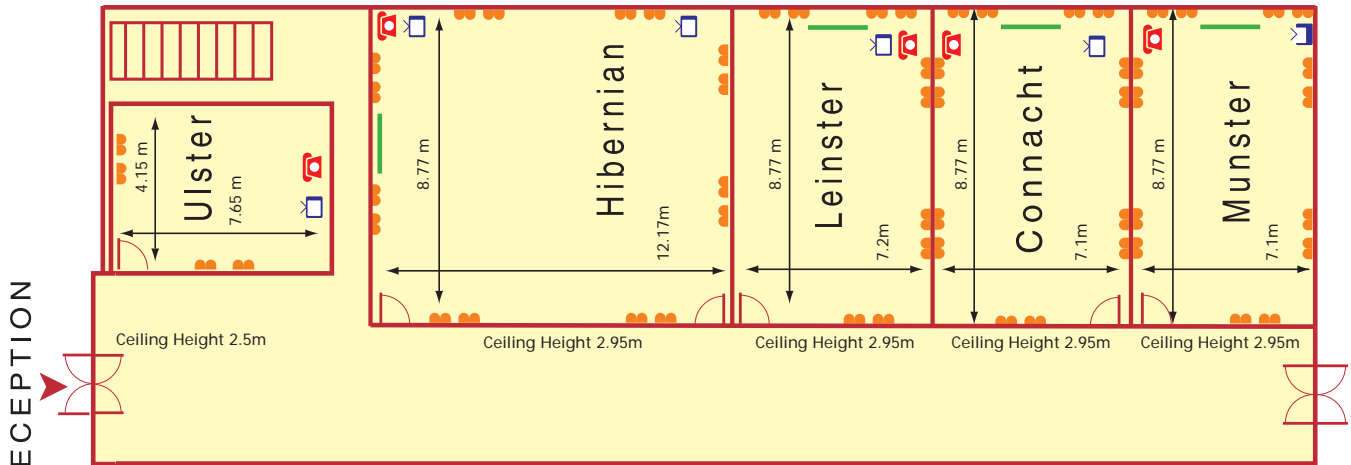


Syndicate Rooms

LAYOUT	NUMBER
Boardroom	8
Dimensions in feet	23' 4" x 13'
Dimensions in metres	7.8 x 4
Ceiling height	2.5 m / 12' ft

LEGEND	
	Wireless Broadband Internet Access <i>Only available in the second floor syndicate</i>
	Cupboard
	Cassette Unit / AC

Business Centre

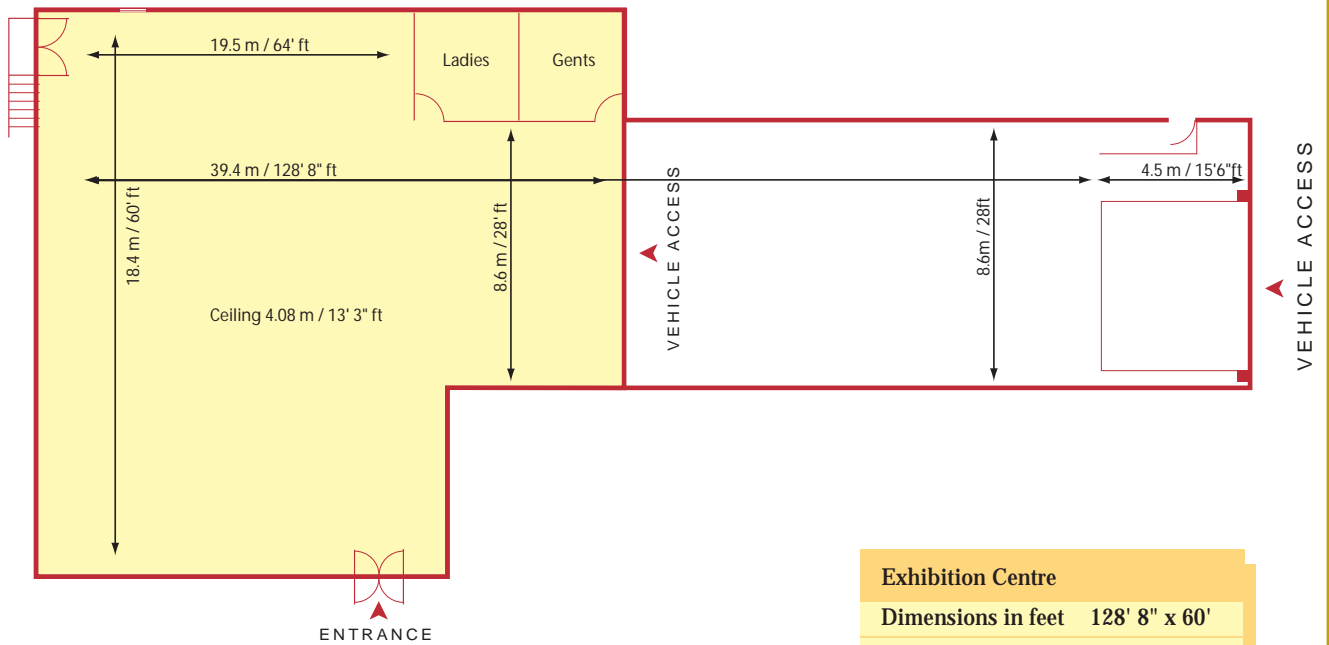


	Theatre Style	Classroom Style	Boardroom Style	U-Shape	Cocktail Reception	Banquet
Hibernian Suite	70	45	30	30	---	---
Leinster Suite	45	24	20	20	---	---
Connacht Suite	45	24	20	20	---	---
Munster Suite	45	24	20	20	---	---
Ulster Suite	20	9	10	8	---	---

LEGEND

- Telephone
- Wireless Broadband Internet Access
- Television Outlet
- Twin Socket
- Automatic Roll Down Screens

Exhibition Centre



Exhibition Centre	
Dimensions in feet	128' 8" x 60'
Dimensions in metres	39.4 x 18.4
Ceiling height	4.08 m / 13' 3" ft